



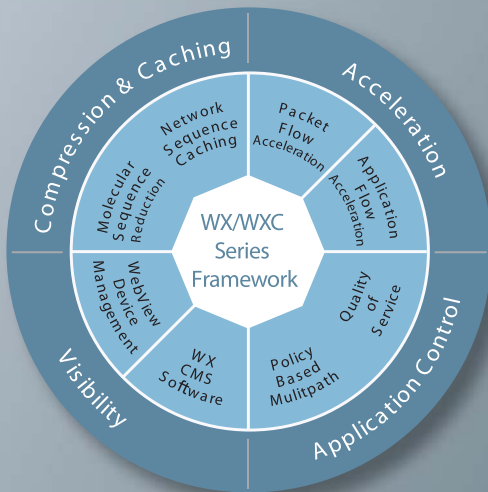
WAN Application Acceleration (WX/WXC) Platforms

Accelerating Application Delivery in the High-Performance Business

GCC's mission is to improve its customers' business efficiencies by resolving the technical limitations of WANs, accelerating application performance and increasing efficient use of available bandwidth.

Application Acceleration Solutions for the Distributed Enterprise

Juniper Networks integrated WX/WXC Framework accelerates application performance, facilitates server centralization, and improves disaster recovery, backup, and regulatory compliance. The result is greater employee productivity, unified insight into WAN and application performance, and reduced IT expenses.



The WX/WXC Series Framework

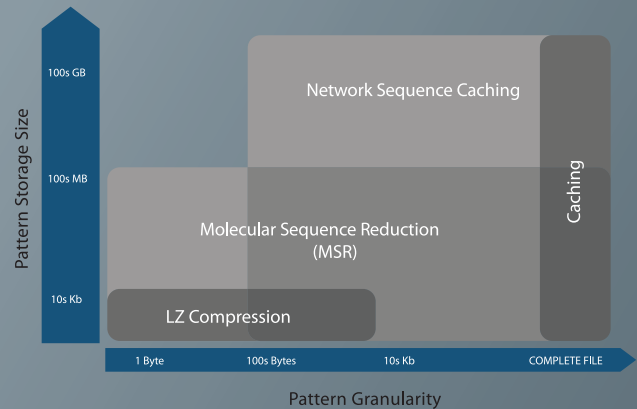
Compression and caching: To reduce the amount of data actually flowing across wide area links by eliminating redundant data patterns and boosting connection capacity to accommodate a greater volume of traffic.

Acceleration techniques: To speed the performance of specific applications and protocols over the WAN, cutting response times and optimizing traffic flows to deliver a more LAN-like experience for remote office users.

Application control: QoS, bandwidth management, and Policy-Based Multipath features ensure that applications make the most efficient use of available links and bandwidth to optimize performance and prioritize mission-critical data traffic.

Visibility into WAN links and application performance: To enable IT to understand how all WAN endpoints are performing, providing the information needed to make informed capacity planning and configuration decisions, as well as to quickly detect, isolate, and resolve performance problems.

REAL-WORLD BENEFITS



Increased Bandwidth: The Sequence Caching and MSR technologies benefit different traffic types in their compression and caching capabilities. Both provide far broader advantages than file caching or traditional compression.

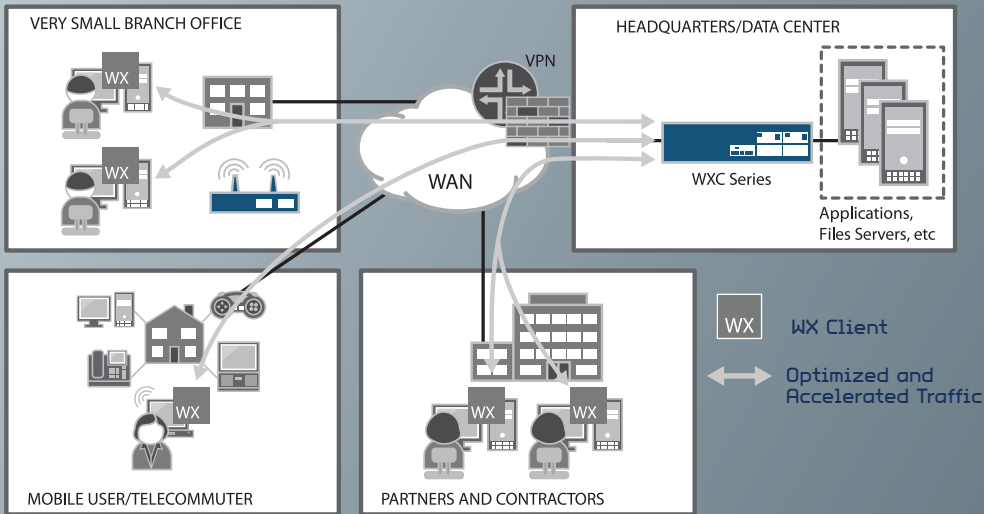
Business Problems We Solve

- **Server centralization and data center consolidation**
 - » Reduces IT costs by eliminating need to manage, maintain and support application servers in branch locations
 - » Accelerates performance for branch-office users accessing applications over the WAN, improving productivity by providing a more LAN-like experience

JUNIPER NETWORKS

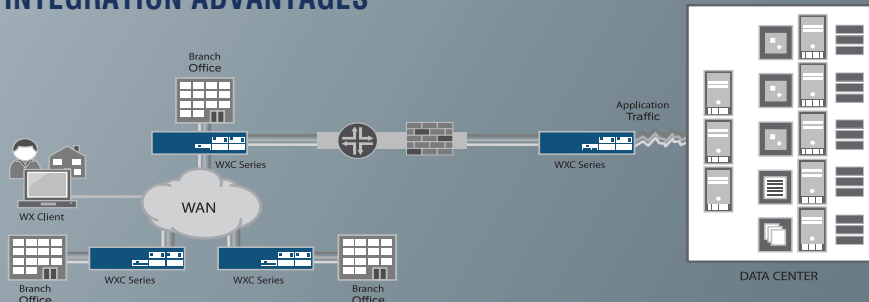
- **New application rollout and webification**
 - » Compression and caching create capacity for new applications and rich content of web-enabled interfaces
 - » QoS, bandwidth management ensure reliable delivery of high-priority traffic
- **Disaster recovery, data replication/backup and regulatory compliance**
 - » Regulations require redundant data centers and disaster recovery sites to be farther from primary sites
 - » Accelerating applications enable enterprises to continue to meet their recovery point objectives when high-bandwidth/low-latency services aren't available
 - » Regulatory compliance and business continuity are drivers
- **Accelerating Microsoft applications in the extended enterprise**
 - » These pervasive applications were designed for LAN deployment and create an "immediate need" for enterprises when servers are centralized

WX CLIENT: APPLICATION ACCELERATION FOR MOBILE USERS AND SMALL OFFICES



WX Client deployment scenarios

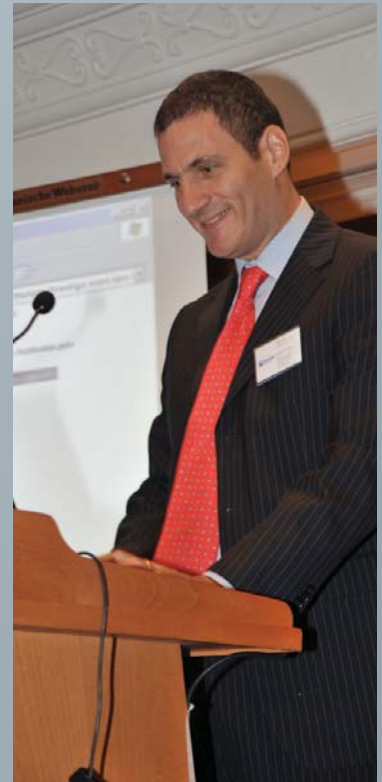
INTEGRATION ADVANTAGES



WXC Series reduce application traffic on the WAN, opening up capacity and improving response times for **remote and branch-office users**.

» OTHER NEWS

"Juniper In The Enterprise" was a Huge Success



GCC Announces the success of its presentation "Juniper In The Enterprise" at Hilton Cyprus on November 10 where we launched, for the first time in Cyprus, Juniper Networks, the industry's only open solution set to deliver intelligent security and performance across all enterprise locations.

We were honored by the presence, contribution and participation of Juniper representatives from Italy and the respectable interest shown by over 60 key persons from diverse organizations across our island.

FOR FURTHER INFORMATION VISIT OUR WEBSITE OR FEEL FREE TO CONTACT US:

Tel: (+357) 22206222 / Fax: (+357) 22313988 / email: info@gcc.com.cy

HARDWARE & NETWORKS INFRASTRUCTURE | NETWORK SECURITY | ACCESS CONTROL | TIME & ATTENDANCE

JUNIPER NETWORKS

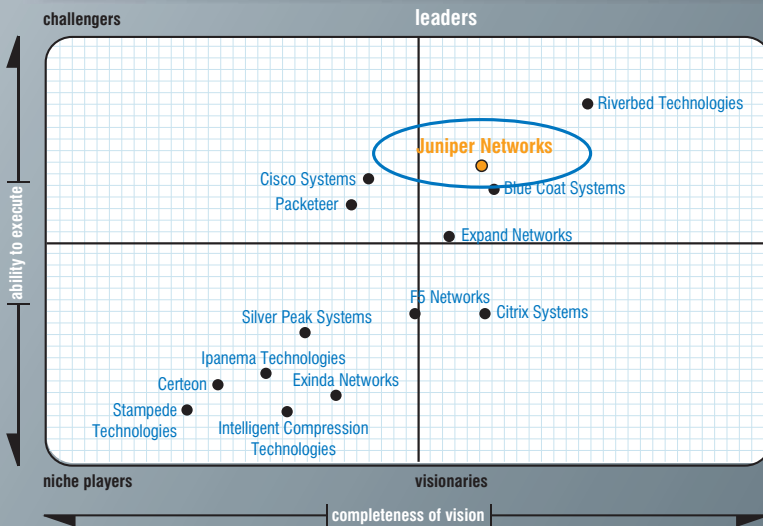
- Only Juniper provides application acceleration across the broadest range of application types along with a broad portfolio of complementary security and transport solutions
- The WX/WXC platforms increase WAN capacity and support new application rollouts without requiring network or bandwidth upgrades, delivering a highly favorable return on investment
- The WX/WXC platforms provide significant productivity gains across the full gamut of business applications, including web-enabled, client-server, legacy and custom software applications
- The WX/WXC platforms produce cost savings through hardware, application software license, WAN services and IT staff reductions
- The WX Central Management System offers unparalleled insight into the performance of applications across the enterprise, enabling users to detect, isolate and resolve performance problems and make informed capacity planning and network configuration decisions
- Facilitate regulatory compliance through application server and storage centralization, even as enterprise users grow more distributed

Sound Bites

- Speed application response times by 5-10x
- Increase bandwidth capacity by 4 - 50x
- Ensure delivery of real-time applications by transparently working with priority queues on WAN services such as MPLS-based IP-VPNs
- ROI in less than 12 months

GARTNER MAGIC QUADRANTS:

WAN Optimization (Wide Area Network)



OTHER NEWS



Juniper offers a high-performance network infrastructure that creates a responsive and trusted environment for accelerating the deployment of services and applications over a single network. This fuels high-performance businesses.

Speakers:

Mr Giulio Barki, Juniper Sales Manager Italy, Greece, Cyprus & Malta
Mr Umberto Pirovano, Juniper Technical Manager Italy, Greece, Cyprus & Malta
Mr Gilles Trachsel, EMEA Product Marketing Manager.

NEXT ISSUE

GCC Computers Ltd is introducing KABA ERP Solutions.